

PERI ASG 70-100

The narrow bracket platform for restricted working areas

The ASG 70-100 platform is designed for use in restricted working spaces where standard working platforms cannot be used.

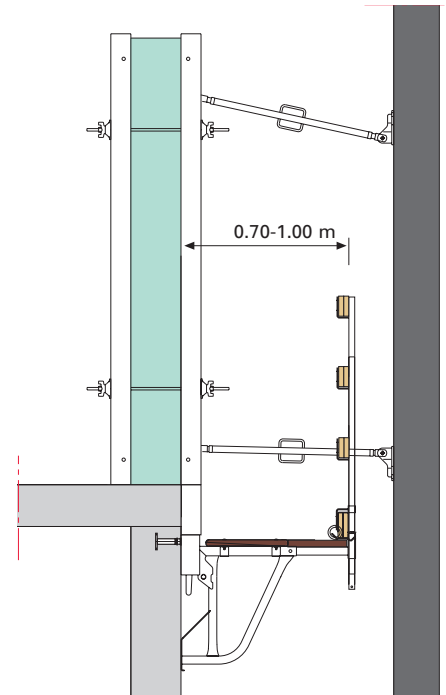
The 70 cm wide decking means that it can also be used on basement walls in close proximity to sheet piling.

Two platform lengths of 2.40 m and 3.00 m are available. In special cases, the brackets can also be used individually with planking.

The ASG platform is fully assembled when delivered to the construction site. Simply attach to the crane, open brackets and attach handrail with HSGP posts.



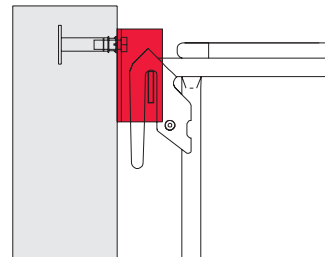
ASG 70/100 platform with 39 mm thick, multi-veneer decking.



Formwork up to 5.40 m high can be positioned on the wall scaffold hinge.

Required anchor components:

Re-usable components		Lost components
M 24 x 70 10.9 Item no.: 026430	Wall Scaffold Hinge ASG Item no.: 026531	Bolt Anchor Sleeve M24 Item no.: 026230

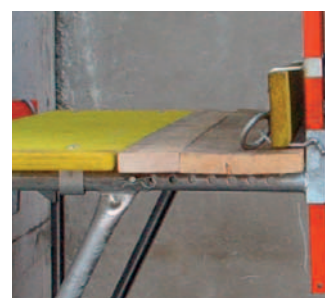


Guide plate at compression point facilitates problem-free moving.

Integrated stacking aid for fast and easy transportation and storage.

Depending on available working space, platform can be widened by 70 cm to 1,00 m with planks.

Integrated crane eyes for fast moving of complete ASG platform.



	Weight kg	Item no.	
Platform ASG 70-100x240 Platform ASG 70-100x298 With continuous 39mm boarding.	45,10 50,00	105843 105844	Unif. distributed imposed load: 150kg/m ²
Accessories: Handrail Post HSGP Wall Scaffold Hinge ASG	3,54 7,73	034580 026531	
Bracket ASG 70-100	12,10	105845	
Accessories: Handrail Post HSGP Wall Scaffold Hinge ASG	3,54 7,73	034580 026531	
Decking Clip ASG 70-100	0,05	105907	
Accessories: F.H. Bolt M8x60 DIN 603 MU	0,03	710326	